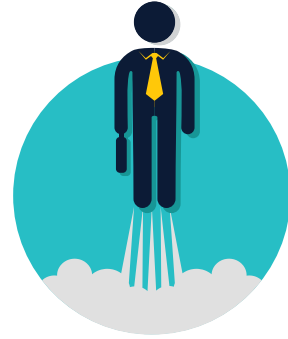


# *Our* **ADVANTAGES**

---



**DEDICATION TO EXCEPTIONAL  
PATIENT CARE AND ACCESS**



**OPPORTUNITIES FOR  
CAREER ADVANCEMENT**



**VALUES-BASED CULTURE**



**EPIPHANY UNIVERSITY  
(INTERNAL TRAINING PROGRAM)**



**BEST-IN-CLASS  
TECHNOLOGY AND TOOLS**